



JEWEL BEETLES OF IDAHO

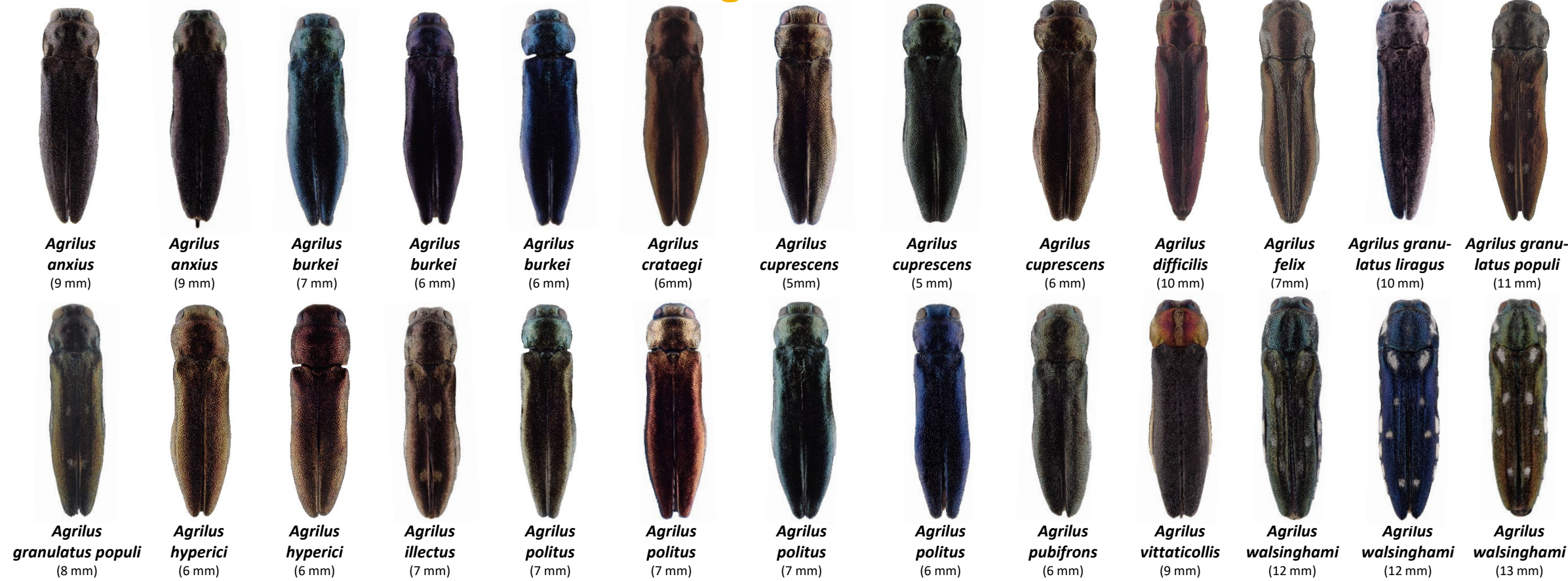


University of Idaho

Jewel Beetles (family Buprestidae) are wood-boring beetles whose larvae feed on the roots, logs, branches, and leaves of various trees and plants. They tend to favor dead or dying trees. There are 102 species in Idaho, all illustrated here except for: *Agrilus cyanescens*, *Anthaxia furnissi*, *A. helferiana*, *A. strigata*, and *A. tarsalis*.

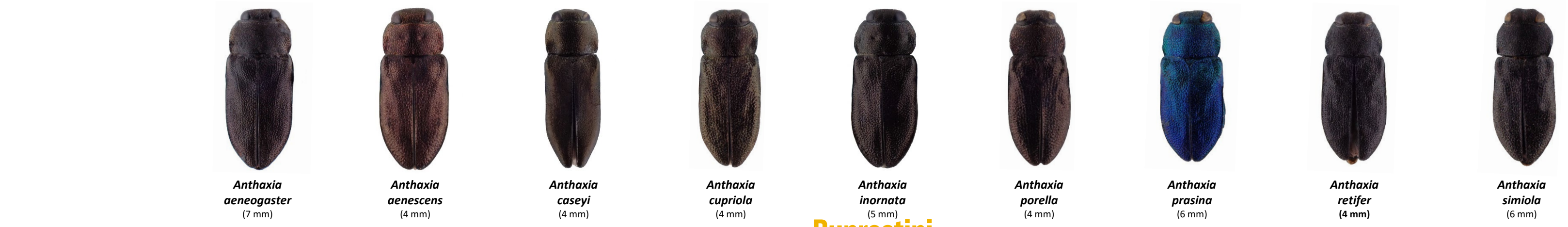
AGRILINAE

Agrilini



BUPRESTINAE

Anthaxiini



Buprestini



Thrincopygini

POLYCESTINAE

Acmaeoderini



CHRYSOCHROINAE

Sphenopterini

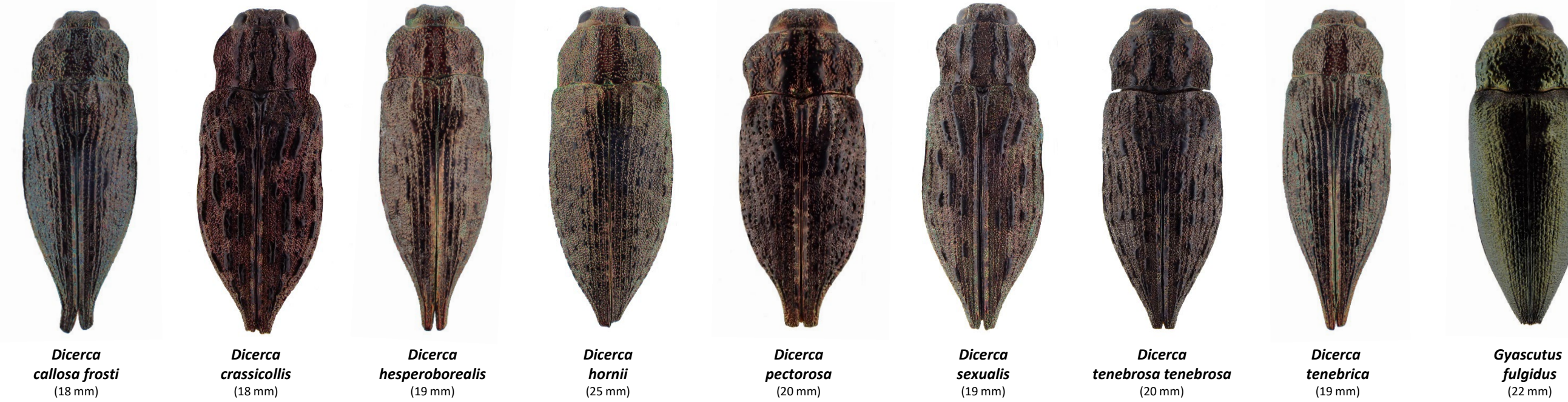
Chrysochroini

Poecilnotini

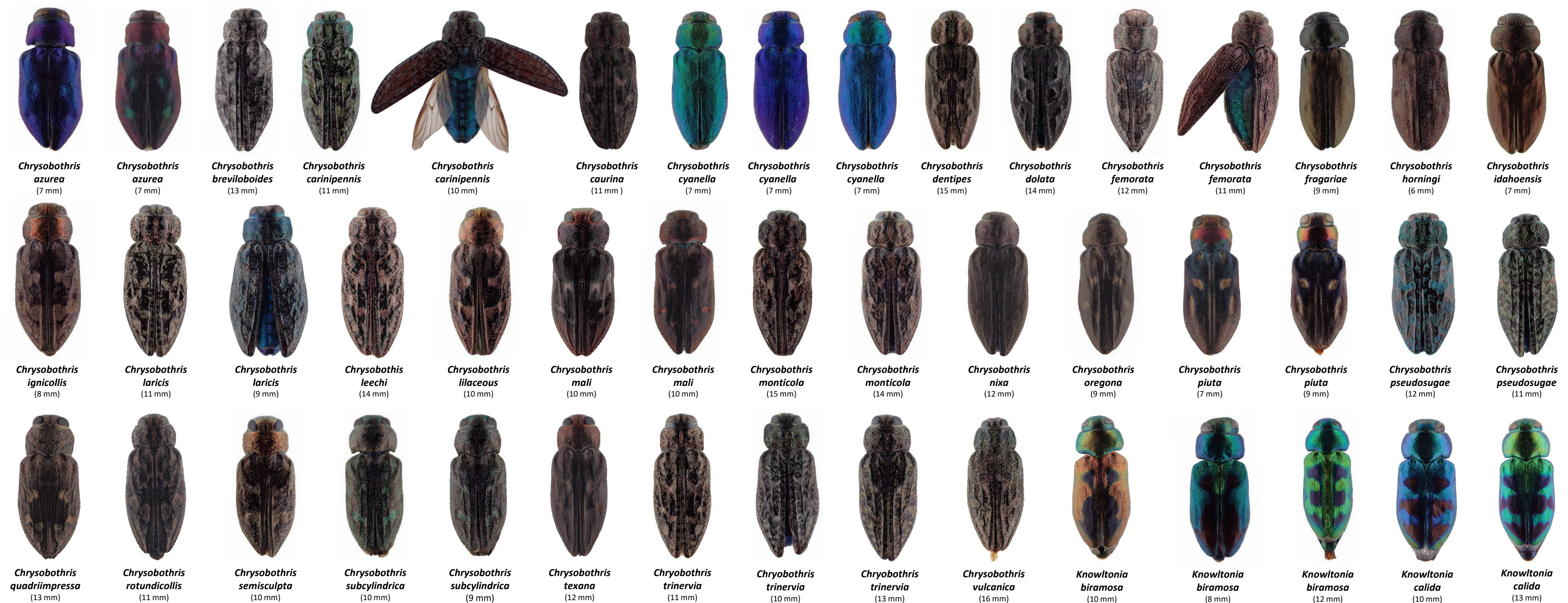
Paratassini



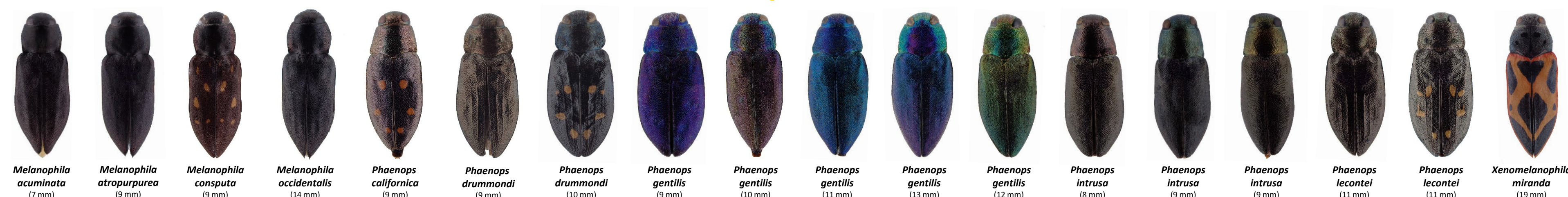
Dicercini



Chrysobothrini



Melanophilini



©Copyright 2022 University of Idaho Barr Entomological Museum. Downloading, printing, sharing and distribution are allowed. Partial reproduction for non-commercial purposes allowed if original source is acknowledged. Unauthorized sale is strictly prohibited. This poster was compiled by Emma Eakins and Luc Leblanc. All photographed specimens are digitized (<https://scan-bugs.org>) and deposited at the William F. Barr Entomological Museum (University of Idaho, Moscow, ID).